

Self-Supervised Learning for SAR

Benchmarking Datasets &
Performance on Diverse
Downstream Tasks

Anna Jungbluth, Matt Allen, Francisco Dorr,
Laura Martinez-Ferrer, Joseph Alejandro Mejía,
Freddie Kalaitzis, Raúl Ramos-Pollán



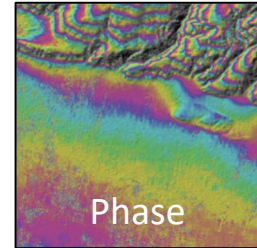
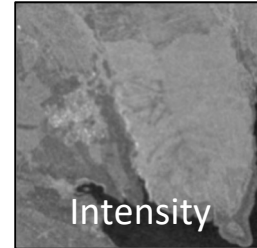
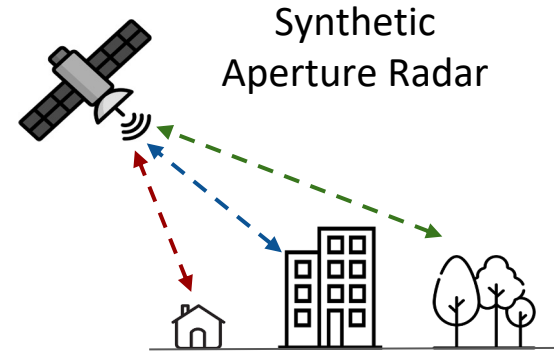
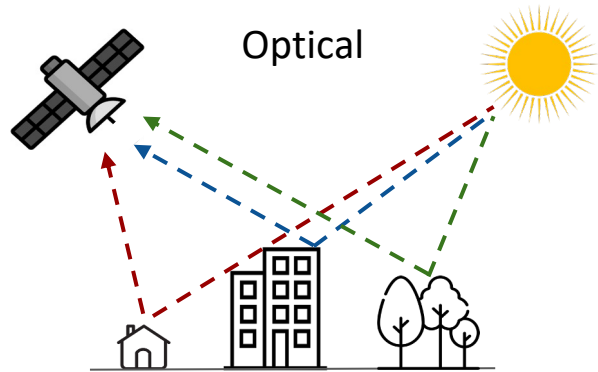
Monitoring using Earth Observation

We are witnessing **land changes** and increasingly frequent **natural disasters**,

e.g. deforestation, heatwaves, severe floods and droughts.



Satellite Earth Observation



Benefits & Complexities of SAR Data

Light & Weather Independence



Solid Object Penetration



Sensitivity to Spatial Changes



Benefits & Complexities of SAR Data

Light & Weather Independence



Solid Object Penetration



Sensitivity to Spatial Changes



SAR Pre-processing:

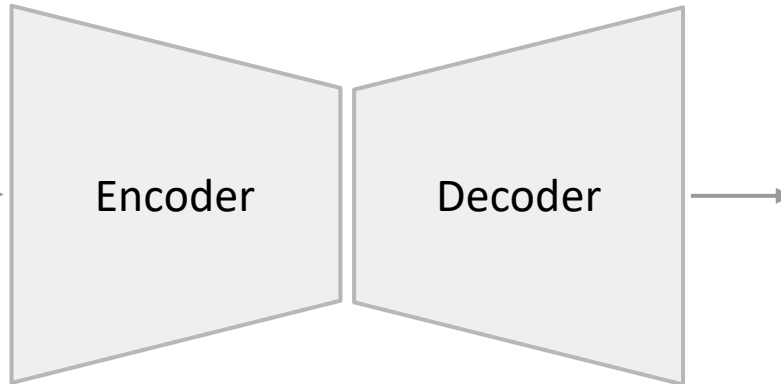
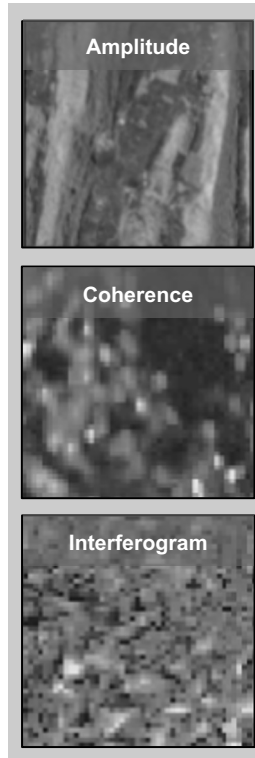
- Orbit Corrections
- Radiometric Calibration
- Speckle Filtering
- Terrain Correction
- ...

SAR Products:

- Polarimetry (VV/VH/HV/HH)
- Coherence
- Interferograms
- ...

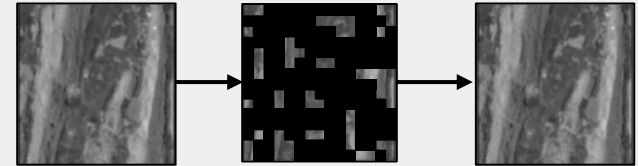
Self-Supervised Learning (Without Labels)

SAR Inputs



Pretext Tasks

Example Task 1: Predict Missing Pixels



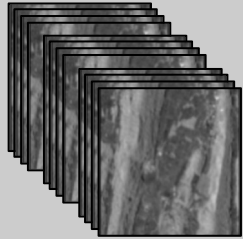
Example Task 2: Match Encodings



Shared information?
Same location?

Self-Supervised Learning Architectures

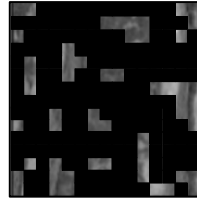
SAR Inputs



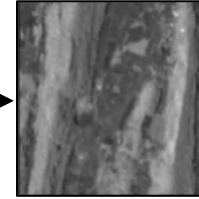
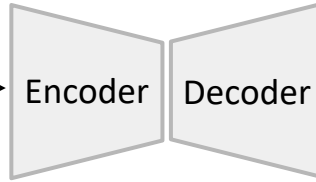
12 Channels

Sentinel-1 GRD
Amplitude
VV, VH, VV/VH
Seasonal Means

Masked Autoencoder (MAE)



He et al., arxiv: 2111.06377

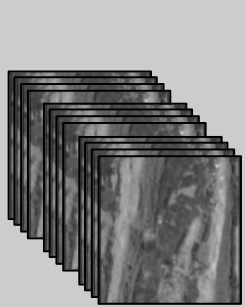


Why?

- Robustness to noise/
missing data

Self-Supervised Learning Architectures

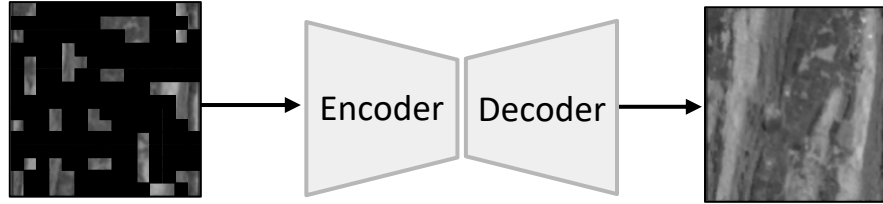
SAR Inputs



12 Channels

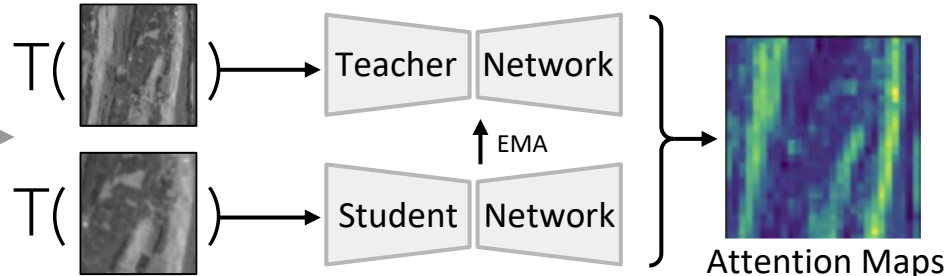
Sentinel-1 GRD
Amplitude
VV, VH, VV/VH
Seasonal Means

Masked Autoencoder (MAE)



He et al., arxiv: 2111.06377

Self-Distillation with No Labels (DINO)



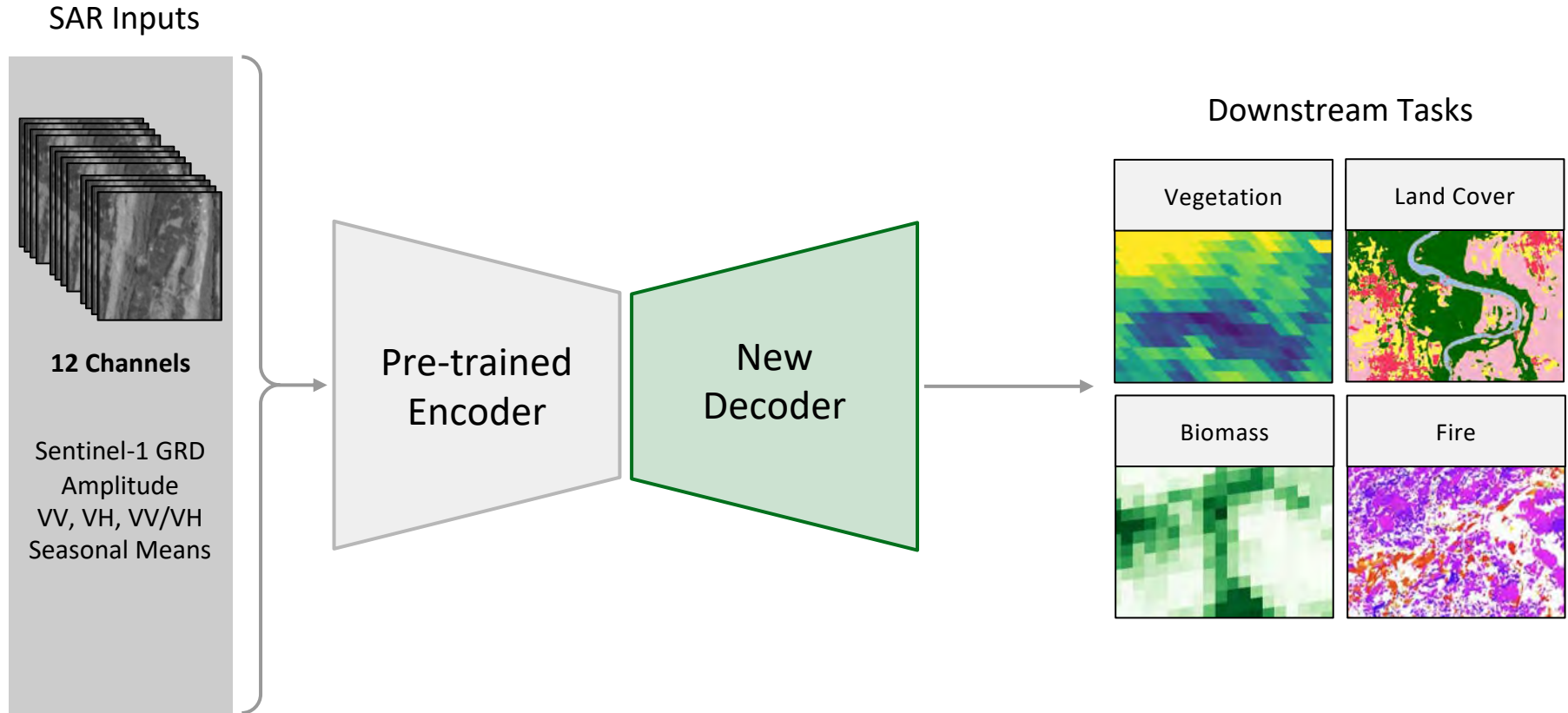
Caron et al., arxiv:2104.14294

Why?

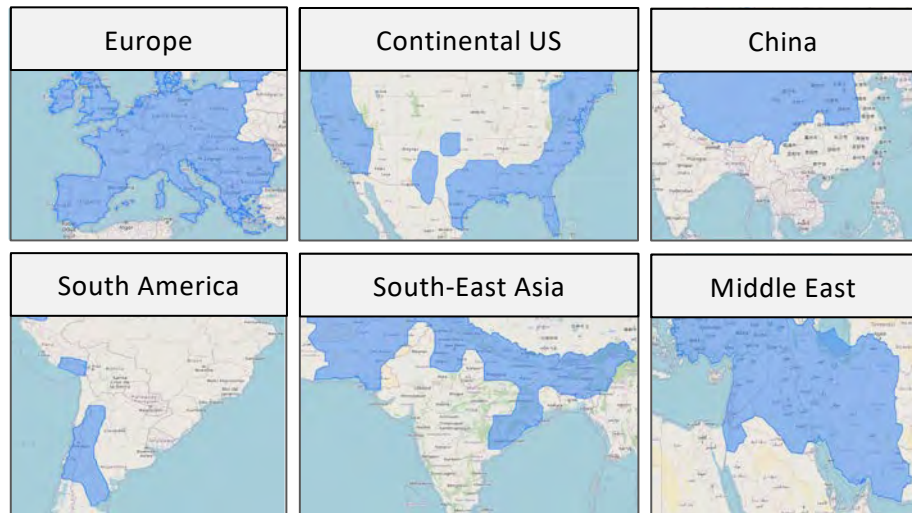
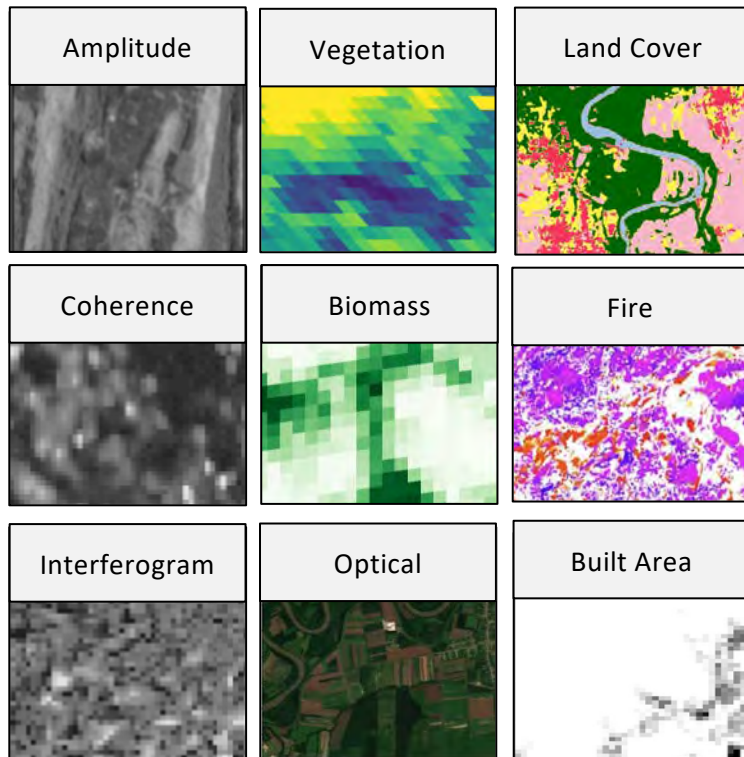
- Robustness to noise/missing data

- Multiscale Invariance
- Emergent Segmentation

Downstream Fine-tuning (With Labels)



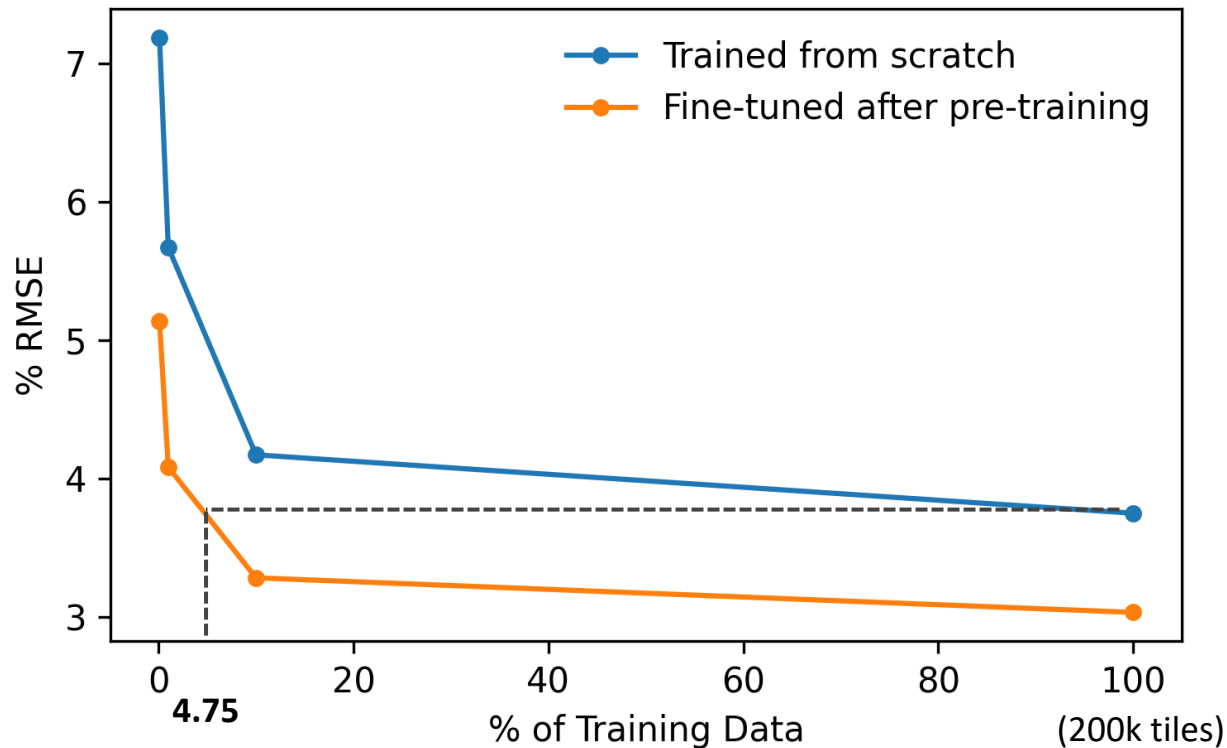
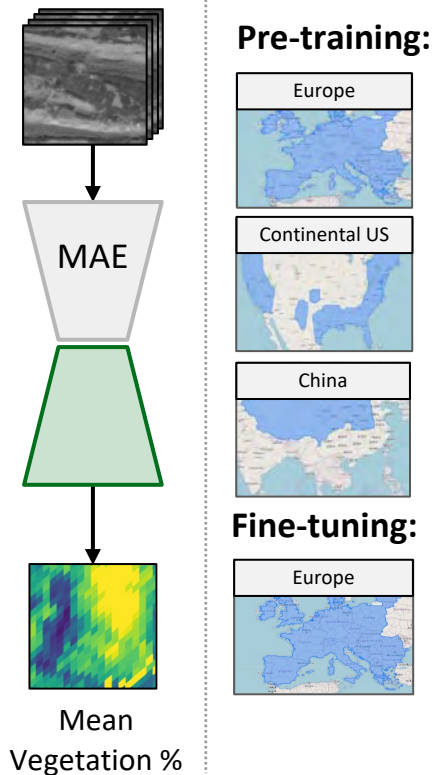
Benchmarking Datasets



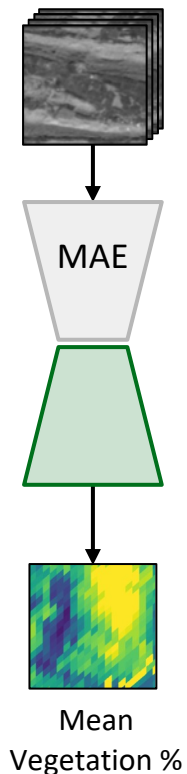
- 25+ TB of co-aligned data tiles
- Soon available on spaceml.org



Improved Vegetation Prediction with Pre-Training



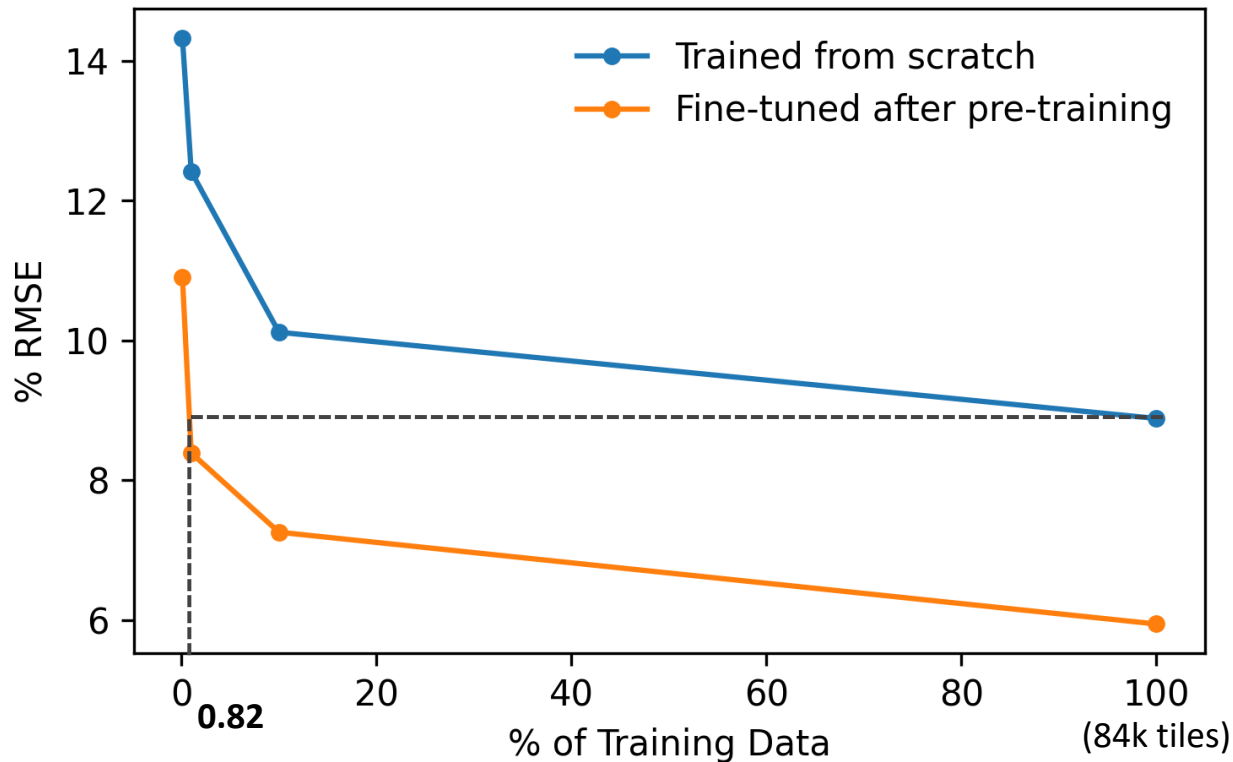
Improved Vegetation Prediction with Pre-Training



Pre-training:



Fine-tuning:



1%

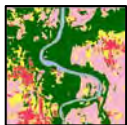
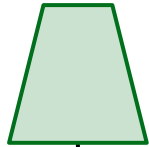
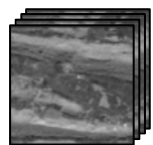


Vegetation Prediction
(after training on 2000 tiles)



Ground Truth

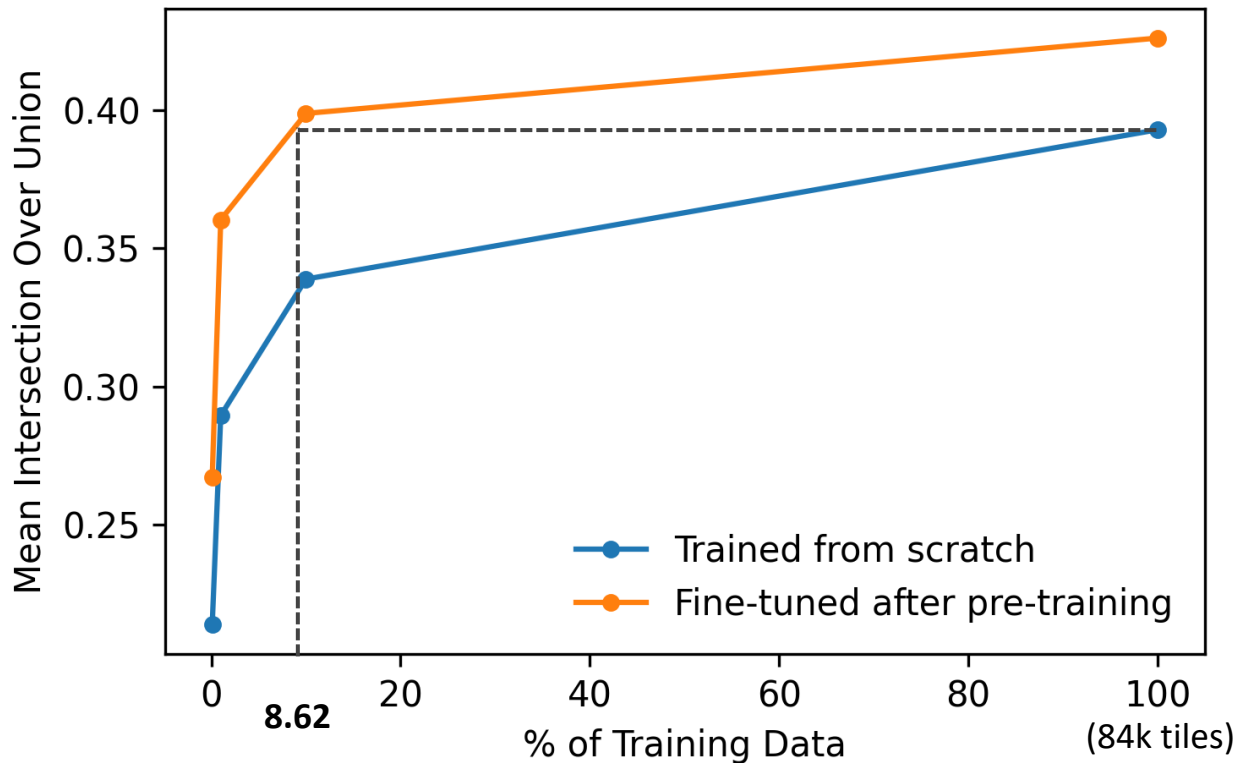
Improved Land Cover Classification with Pre-Training



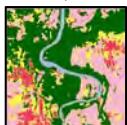
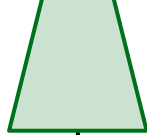
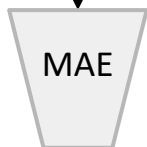
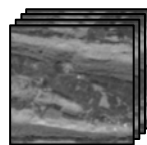
Pre-training:



Fine-tuning:



Improved Land Cover Classification with Pre-Training



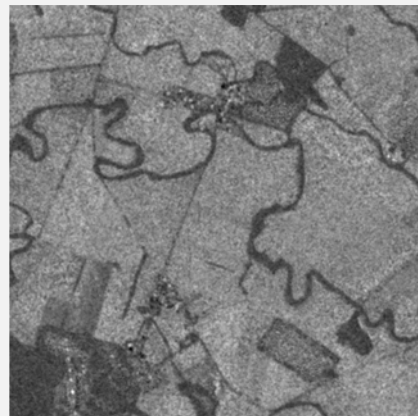
Pre-training:



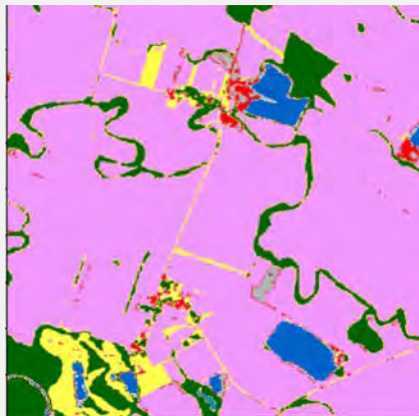
Fine-tuning:



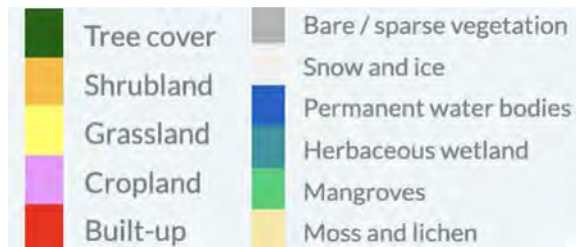
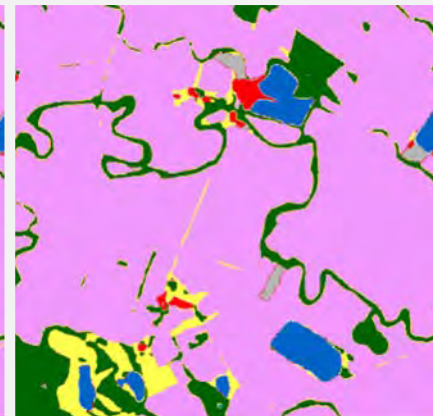
SAR Input



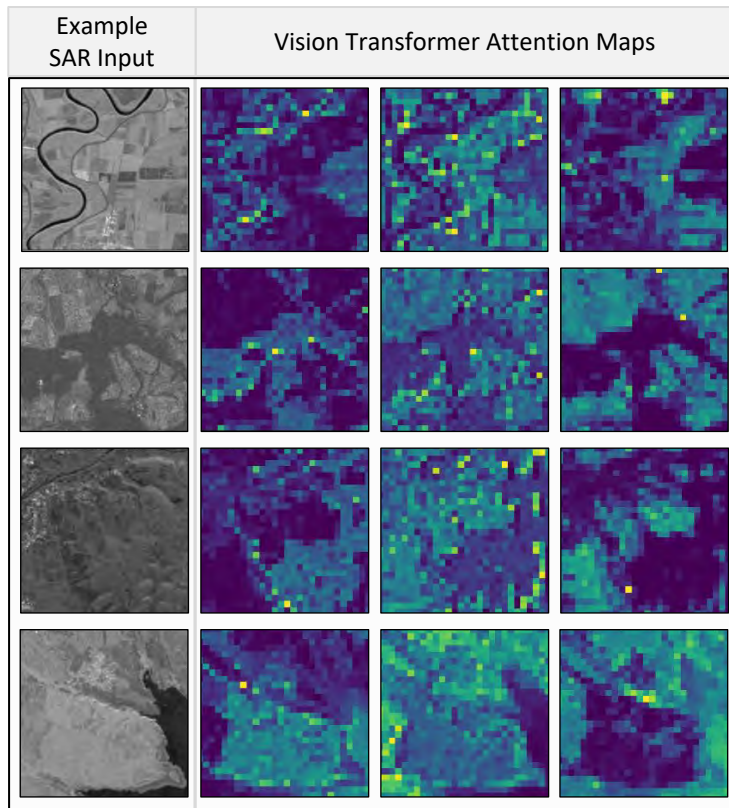
Ground Truth




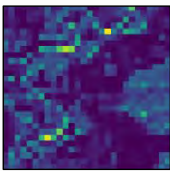
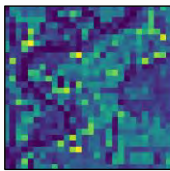
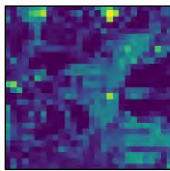



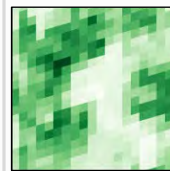
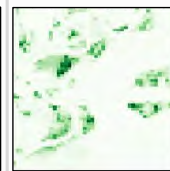
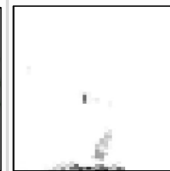

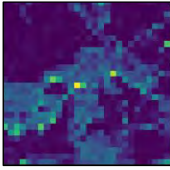
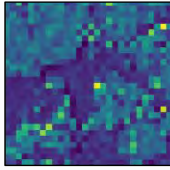
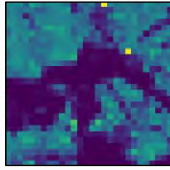

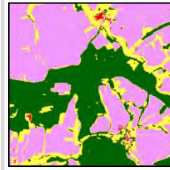


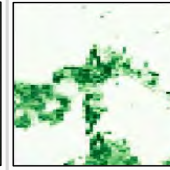
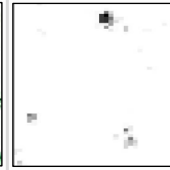
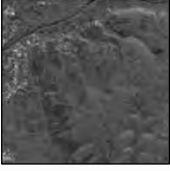
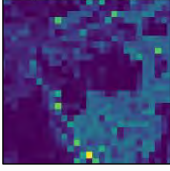
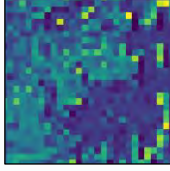
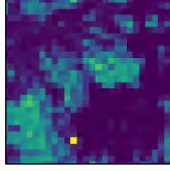

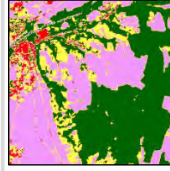

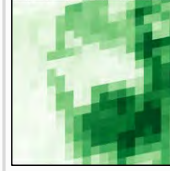
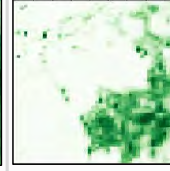


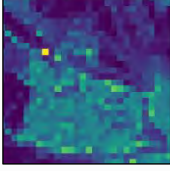
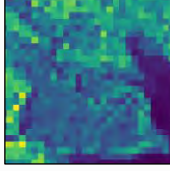
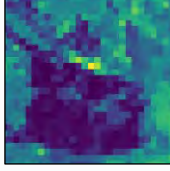

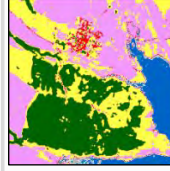

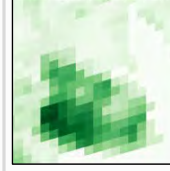

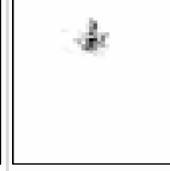
Prediction



Emergent Segmentation in DINO Attention Maps

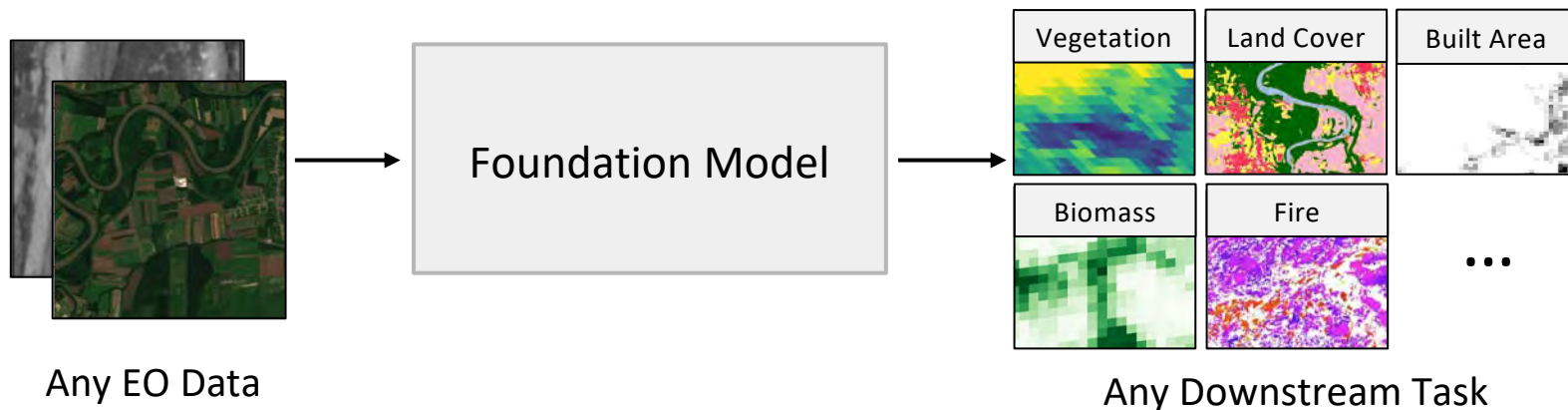


Emergent Segmentation in DINO Attention Maps

Example SAR Input	Vision Transformer Attention Maps			Sentinel 2	High Res. Land Cover	Med. Res. Land Cover	Vegetation	Biomass	Built Area
									
									
									
									

Summary & Conclusions

- Tested SOTA unsupervised models (MAE/DINO)
- Clear benefits of pre-training without labels
- Good performance even with small fine-tuning datasets
- Attention maps hold value for diverse tasks





FREDDIE KALAITZIS



RAÚL RAMOS-POLLÁN



LAURA MARTÍNEZ-FERRER



FRANCISCO DORR



J. JOSEPH ALEJO GALLEGOMEJÍA

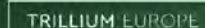
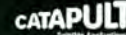
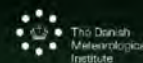
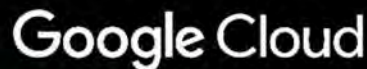


MATT ALLEN

Papers & Datasets →



Φ-lab



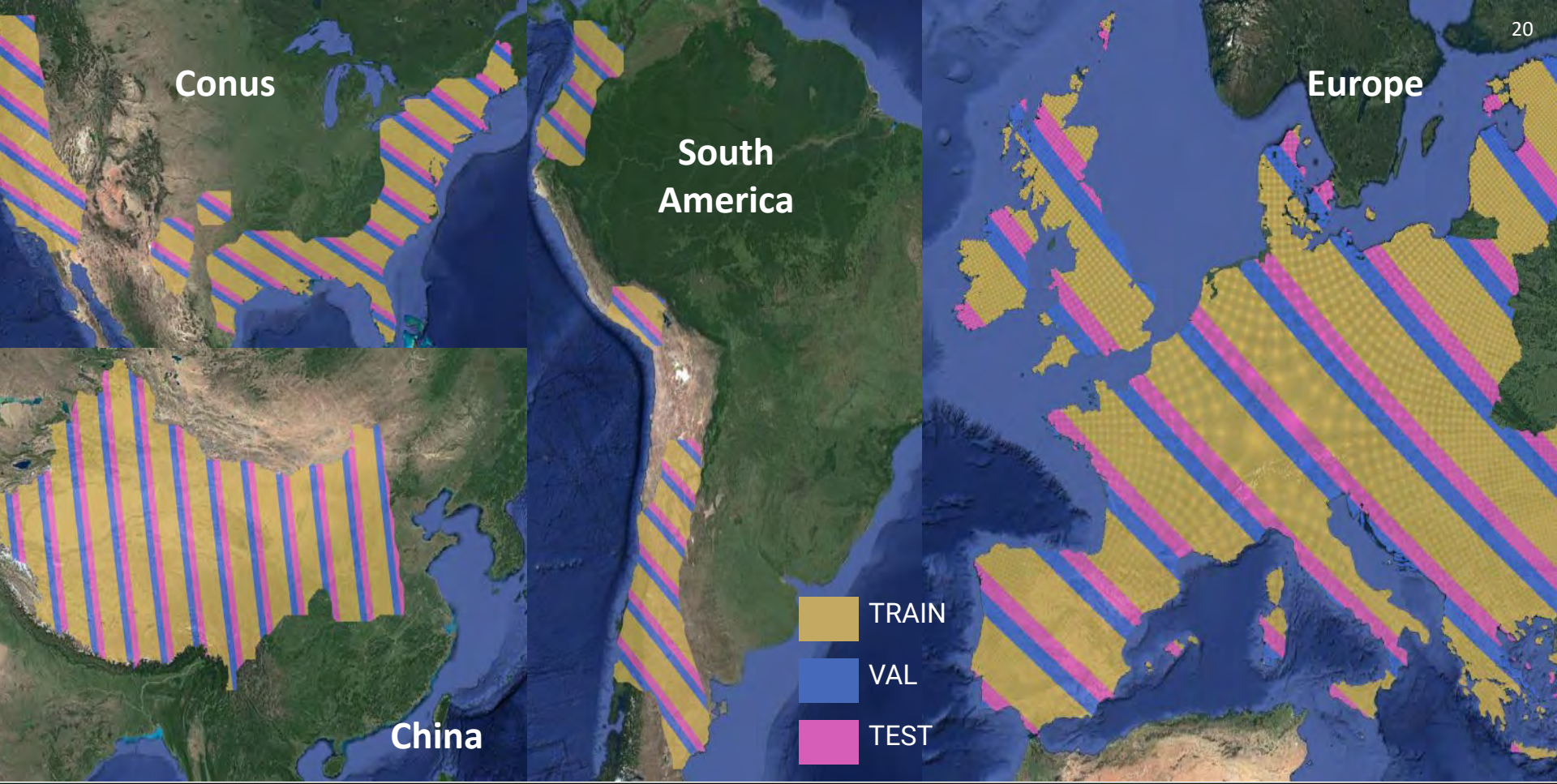
Conus

South America

Europe

China

- TRAIN
- VAL
- TEST



Overview of DINO Architecture

